

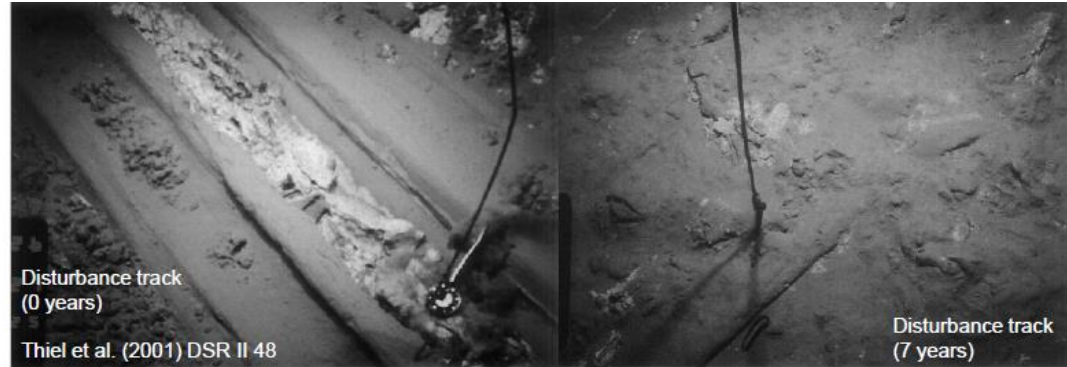
ECOLOGICAL ASPECTS OF DEEP-SEA MINING

Joachim Harms, Germany



Background: Deep-Sea Mining

- Interest in marine mineral resources has increased from public and private actors.
- Many countries hold licence areas from the International Seabed Authority.
- The ISA is developing its Mining Code.
- Yet, very little is known on the potential long-term environmental impact of these activities.



Pilot Action: Ecological aspects of deep-sea mining

- 11 member countries (DE, BE, FR, IT, NL, NO, PL, PT, RO, SE, UK) launched a pilot action.

Aim

- Integration of national research activities and joint use of infrastructures.

Objectives

- Analyse the long-term ecological impacts of deep-sea mining and devise monitoring strategy.
- Ultimately, make recommendations to policy-makers, industry and the ISA.



Pilot Action: Ecological aspects of deep-sea mining

Activities

- Germany has offered 118 days on the *RV Sonne* for a joint cruise in the Pacific.
- Researchers from 25 institutes are jointly studying:
 - Environmental status of polymetallic nodule habitats in the DISCOL Area
 - Implications for future nodule mining activities in the CCFZ

Scientific Coordination

- GEOMAR Helmholtz Centre for Ocean Research Kiel

Project duration

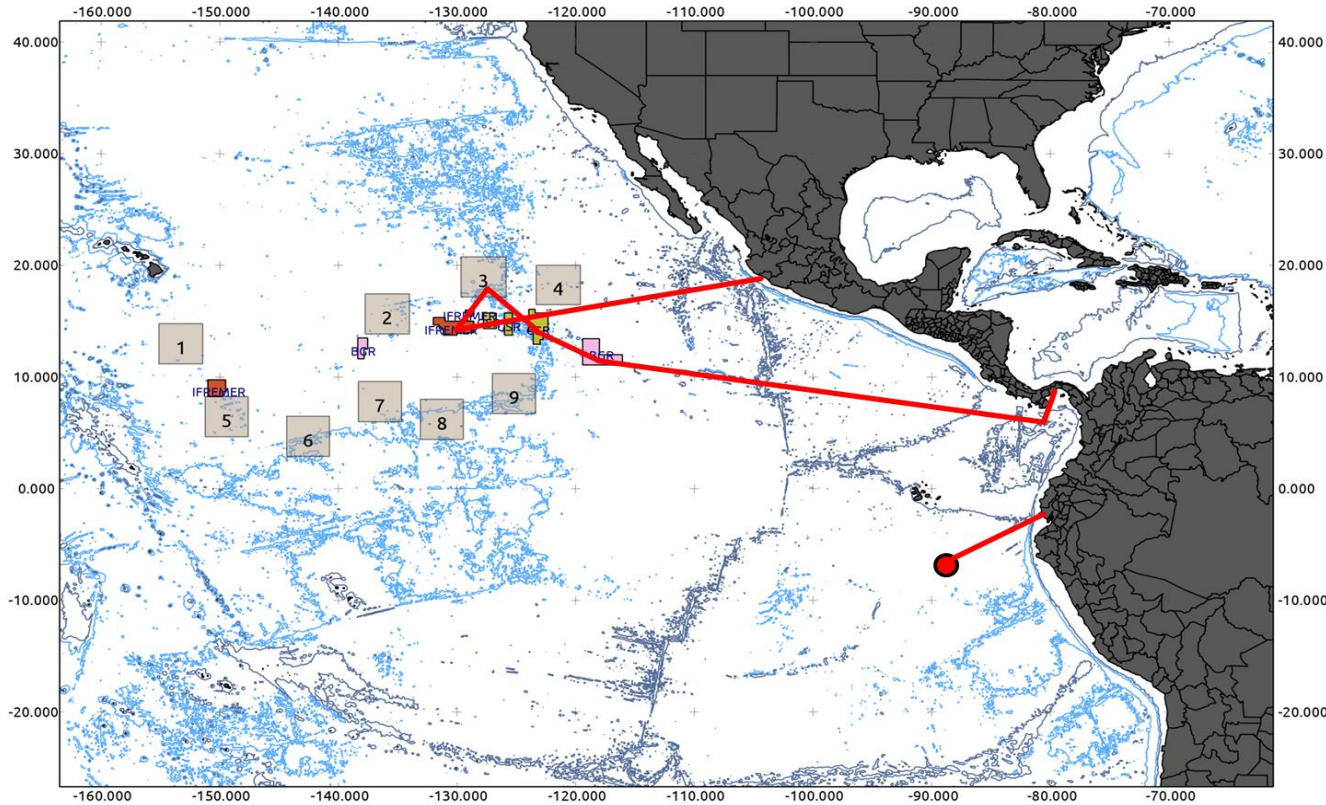
- Jan. 2015 – July 2018, including 3-legged cruise

Budget

- Approx. € 9.7m (total funding: ~6.2m €; + 118 ship days)



Joint Cruise



First leg started on 11 March 2015 - ongoing.

Follow the blog on:

<http://www.oceanblogs.org/easdm/>